



St Ailbe's 1st year Information Evening for Parents

WELCOME ALL PARENTS/GUARDIANS OF ALL 1ST YEAR STUDENTS
THANK YOU FOR SELECTING ST AILBE'S FOR YOUR SON/DAUGHTER.



St Ailbe's School
Scoil Ailbhe Naofa



[St Ailbe's School](#) > [News & Events](#) > [New First Year Info Sept 2025-26](#)

New First Year Info Sept 2025-26

[HOME](#)[INFORMATION](#)[CURRICULUM](#)[EXTRA CURRICULAR](#)[NEWS & EVENTS](#)[DOWNLOADS](#)[CONTACT US](#)[CAREERS INFORMATION](#)

NEW FIRST YEAR INFO SEPT
2025-26

ST AILBE'S RETURN TO
SCHOOL 2020-21

SCHOOL NEWS

Welcome to St. Ailbe's

Our mission is to provide quality education that meets the actual needs of young people in the best quality learning environment.

[READ MORE](#)[Incoming Student Survey 2025-26](#)[Book One to One meetings 2025](#)[Exam Revision Info](#)[Exam revision Login](#)[Book Tracksuit fitting.\(Not open yet\)](#)[Administration of Medication Survey](#)[Introduction Letter to Parents](#)[Way2Pay Information](#)[Video 1 Introduction](#)[Video 2 Subject and Timetable](#)[Video 4: Student Support and pastoral Care](#)[Video 5: VS Ware Demo Video for Parents](#)[Class Materials List Incoming First Years](#)[Order school Tracksuit](#)

www.stailbes.ie



Outline

- Curriculum
- Timetables
- Materials / Uniform
- Pastoral Care/Guidance
- VShare
- Way2pay
- Communication with school / Parents
- Student Journal



Junior Cycle Subjects

Core subjects:

- Irish
- English
- Maths
- Science
- History
- Career Guidance*
- CSPE*
- SPHE*
- Identity, Multi-belief and Values Education*

Option subjects: (Pick 3)

- French
- Applied Technology
- Geography
- Wood Technology
- Visual Art
- Home Economics

Block 1

- Visual Art
- Music
- Home Economics
- Wood Technology
- Graphics
- Engineering
- Business
- Geography

Block 2 & 3

***Non Exam Subjects**



Option Blocks

(Open to change)

Block 1: French, Geography, Technology, Wood Tech, Art, Home Economics

Students will pick a subject from **Block 1** before starting 1st year, either through an on-line survey or based on discussions at the one-to-one meetings with Mr Devitt, Mr Keating or Mr O'Dwyer. The reason for this is that we don't want to wait 15 weeks before starting French.

Block 2 and 3: Business, Engineering, Home Economics, Visual Art, Woodwork, Graphics, Music, Geography



Option Blocks (contd.)

Every 3 weeks, for a total of 15 weeks, students will experience 2 new subjects from option **Blocks 2 & 3**.

- Throughout the 15 weeks students will take part in a **Wellbeing Module**.
- Timetabled subjects will change **5 times** from **September to Christmas**.
- Each student will carry 8 subjects through to 3rd year (5 core and 3 options).



Junior Cycle Profile of Achievement (JCPA)

At the end of the 3-year cycle students will receive a junior cycle profile of achievement which will comprise of:

- 2 Classroom-based assessments (CBA), generally one in 2nd year and one in 3rd year.
- Assessment task (10%), based on CBA's.
- A final assessment (90%) in 3rd Year.



School Day

Monday & Wednesday*

4 periods x 40 minutes starting at
8.50am

Break 11.30 – 11.45 (15 mins)

2 periods x 40 minutes starting at
11:45am

Lunch 1.05 – 1.45 (40 mins)

3 periods x 40 minutes until **3:45pm**

Tuesday, Thursday & Friday

4 periods x 40 minutes starting at
8.50am

Break 11.30 – 11.55 (25 mins)

2 periods x 40 minutes starting at
11:55am

Lunch 1.15 – 1.55 (40 mins)

2 periods x 40 minutes until **3.15pm**

***Long day – short break – early lunch**

Timetable 1



	Monday	Tuesday	Wednesday	Thursday	Friday
08:50	Mat 1Mat-3.2 RM10 A.P	Engr 1Engr-1.4 M1 Mark Doherty	Eng 1Eng-B RM10 Rachel Breen	Bus 1Bus-2.5 RM8 R Egan TP 2021-22; BC; K O'Byrne TP 2021-22	His 1His-B RM10 E.O.Dwyer
09:30	Iri 1Iri-5.2 RM10 Eoughan Ryan	Mat 1Mat-3.2 RM10 A.P	Mat 1Mat-3.2 RM10 A.P	Bus 1Bus-2.5 RM8 R Egan TP 2021-22; BC; K O'Byrne TP 2021-22	Engr 1Engr-1.4 M1 Mark Doherty
10:10	Sci 1Sci-B SC 3 FR	W 1W-4.7 W2 EK	Rel 1Rel-B RM10 Aine Phelan TP 2021- 22; BC	PE 1PE-B PE 3 TRISTAN FOGARTY TP 2021-22; H.Dewick	Engr 1Engr-1.4 M1 Mark Doherty
10:50	Sci 1Sci-B SC 3 FR	W 1W-4.7 W2 EK	Tut 1Tut-B RM10 Mark Doherty	PE 1PE-B PE 3 TRISTAN FOGARTY TP 2021-22; H.Dewick	Iri 1Iri-5.2 RM10 Eoughan Ryan
11:30					
11:45	Engr 1Engr-1.4 M1 Mark Doherty	SPHE 1SPHE-B RM10 EM; LL	His 1His-B RM10 E.O.Dwyer	CSPE 1CSPE-B RM10 JL	Mat 1Mat-3.2 RM10 A.P
12:25	His 1His-B RM10 E.O.Dwyer	Eng 1Eng-B RM10 Rachel Breen	Sci 1Sci-B SC 3 FR	Mat 1Mat-3.2 RM10 A.P	Sci 1Sci-B SC 3 FR
13:05					
13:45	Bus 1Bus-2.5 RM8 R Egan TP 2021-22; BC; K O'Byrne TP 2021-22	Iri 1Iri-5.2 RM10 Eoughan Ryan	Bus 1Bus-2.5 RM8 R Egan TP 2021-22; BC; K O'Byrne TP 2021-22	His 1His-B RM10 E.O.Dwyer	Eng 1Eng-B RM10 Rachel Breen
14:25	W 1W-4.7 W2 Oisin Nugent 11-2-22; EK	Dig 1Dig-B RM10 HK	Iri 1Iri-5.2 RM10 Eoughan Ryan	Eng 1Eng-B RM10 Rachel Breen	W 1W-4.7 W2 Oisin Nugent 11-2-22; EK
15:05	Eng 1Eng-B RM10 Rachel Breen		W 1W-4.7 W2 Oisin Nugent 11-2-22; EK		
15:45					

Subject



Teacher



Room Number



Timetable 2 – SEN Class

	Monday	Tuesday	Wednesday	Thursday	Friday
08:50	Mat 1Mat-3.1 RM9 R Egan TP 2021-22; RR	W 1W-1.1 RM11 K.Hayes	SPHE 1SPHE-A RM9 EM: LL	Gra 1Gra-2.5 RM15 Draw RRoche	Eng 1Eng-A RM9 Ciara Bergin TP; SC
09:30	Spe 1Spe-5.8 A.P	Mat 1Mat-3.1 RM9 R Egan TP 2021-22; RR	Mat 1Mat-3.1 RM9 R Egan TP 2021-22; RR	Gra 1Gra-2.5 RM15 Draw RRoche	W 1W-1.1 W2 K.Hayes
10:10	CSPE 1CSPE-A RM9 HK	Tech 1Tech-4.4 W1 PK	PE 1PE-A PE TRISTAN FOGARTY TP 2021-22; RR	His 1His-A RM9 E.O.Dwyer	W 1W-1.1 W2 K.Hayes
10:50	His 1His-A RM9 E.O.Dwyer	Tech 1Tech-4.4 W1 PK	PE 1PE-A PE TRISTAN FOGARTY TP 2021-22; RR	Sci 1Sci-A RM9 N O'Keefe	Spe 1Spe-5.8 B. Connolly
11:30					
11:45	W 1W-1.1 W2 K.Hayes	Sci 1Sci-A SC2 N O'Keefe	Eng 1Eng-A RM9 Ciara Bergin TP; SC	Dig 1Dig-A RM9 HK	Mat 1Mat-3.1 RM9 R Egan TP 2021-22; RR
12:25	Sci 1Sci-A SC2 N O'Keefe	Sci 1Sci-A SC2 N O'Keefe	His 1His-A RM9 E.O.Dwyer	Mat 1Mat-3.1 RM9 R Egan TP 2021-22; RR	Tut 1Tut-A RM9 FK
13:05					
13:45	Gra 1Gra-2.5 RM15 Draw RRoche	Spe 1Spe-5.8 B. Connolly	Gra 1Gra-2.5 RM15 Draw RRoche	Rel 1Rel-A RM9 Aine Phelan TP 2021- 22; Rachel Breen	His 1His-A RM9 E.O.Dwyer
14:25	Tech 1Tech-4.4 W1 PK	Eng 1Eng-A RM9 Ciara Bergin TP; SC	Spe 1Spe-5.8 B. Connolly	Eng 1Eng-A RM9 Ciara Bergin TP; SC	Tech 1Tech-4.4 W1 PK
15:05	Eng 1Eng-A RM9 Ciara Bergin TP; SC		Tech 1Tech-4.4 W1 PK		
15:45					

Subject



Teacher



Spe
1Spe-5.8
B. Connolly



Class Materials

General Items for Every Subject

Pens at least 3 colours, Sharpener, Eraser,

2B & 6B Pencil, Ruler, Highlighters, Coloured Markers Colouring Pencils,
Packet of poly-pockets

Core Subjects	Materials
English	5 A4 hardback copy
Irish	4 120-page soft back copy
Maths	Casio Calculator
Science	Mathematical Set
History	English Dictionary
	Irish Dictionary
	Project Maths Copy





School Books Scheme

Under the schoolbooks scheme the following is provided free of charge:

- All relevant textbooks and workbooks
- School Journal
- 12 copybooks (A mix of hardback, tough shell and softback)
- 1 Science copybook
- 1 calculator
- 1 formulae and tables/log book (*2nd/3rd year as needed*)
- English/Irish Dictionaries (*as needed*)



Uniform

- Navy Pants – *Pleated Check Skirt is also an option for girls.*
- Navy V-Neck Jumper (with School Crest available from O'Deas and Julies).
- White Shirt with Collar.
- Black / Dark Shoes.
- St Ailbe's Tracksuit (available from Idsportshop.com)
Fitting date Friday 20th & Saturday 21st June.



Extra-Curricular Activities



- Soccer
- Spike Ball
- School Musical
- Games Clubs
- Music Generation
- Debating
- Ultimate Frisbee
- Horse Riding
- Create new clubs
- Basketball
- Rugby
- Football
- Hurling
- Coding
- Camogie
- Dungeons & Dragons
- Athletics
- Golf
- Choir



Special Education Needs

To co-ordinate data gathering, screening and testing. Transition planning for students with SEN. Arranging for planning, implementation and review of student support plans. Supporting the communication of information regarding students' needs to subject teachers, and year heads. Liaising with other agencies, NEPS and allied health professionals. Liaising with parents and students.

Meet once a week on Friday.

School Completion Programme

SCP work focuses on targeting and providing supports to young people identified to be most at risk of early school leaving.

Ongoing throughout the week.

Home School Community Liaison

To promote and develop real partnership between parents, teachers and communities, in order to enhance pupils' outcomes and learning opportunities, through improved attendance, participation and retention in the education system.

Ongoing throughout the week.

Behaviour for Learning

The 'Behaviour for Learning' teacher works with identified students, individually or in small groups on Behaviour for Learning programmes that are designed to meet their social, emotional, positive health & wellbeing and behavioural and academic needs, so they can achieve and succeed in school.

Ongoing throughout the week.

Management Team

This is the decision making body of the school and integral to a school's success and direction. They play a major role in the day-to-day running, and also the strategic vision of the school.

Meet once a week on Tuesday.

Subject Teachers

St Ailbe's teachers strive to motivate and engage all their students in learning. They believe every student is capable of achieving success at school and they do all they can to find ways of making each student successful.

Ongoing throughout the week.

TEAMWORK AT ST AILBE'S SCHOOL

Pastoral Care

Pastoral Care is a school based programme to help individual pupils to improve their social, emotional and behavioural skills. As a result of pastoral care pupils should be able to better manage their behaviour and /or improve their attendance.

Meet once a week on Monday.

NBSS Team (NCSE)

NBSS Team (NCSE)

The aim of this support is to stimulate the creation of school cultures that actively promote positive behaviour to enrich the learning and teaching experiences of all members of the school community.

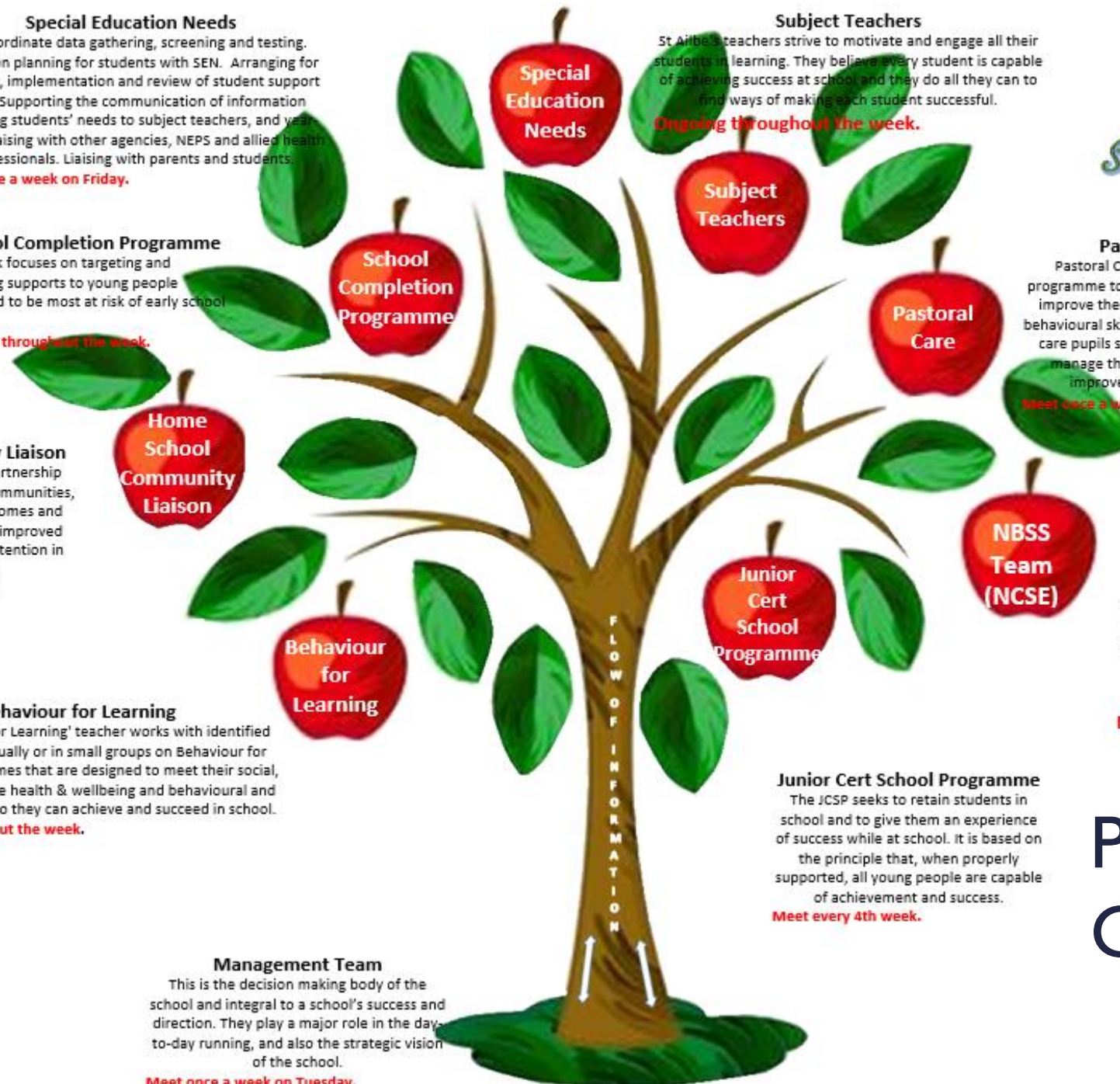
Meet once every term.

Junior Cert School Programme

Junior Cert School Programme

The JCSP seeks to retain students in school and to give them an experience of success while at school. It is based on the principle that, when properly supported, all young people are capable of achievement and success.

Meet every 4th week.



Pastoral Care & Guidance Teams



Supports to Assist 1st Years

- Stay Safe
- Friends For Life
- Transition Program
- Mentor/Buddy
- Alert Program
- Homework Club
- Evening study
- Counselling Services
- Numeracy Ninjas
- Don't be mean behind the screen
- Working Things Out
- Check & Connects
- 6 week guidance module
- Restorative Practice



Homework Club

No Charge

- 1 hour after school
- Fully Supervised
- Food/snack provided
- Register is maintained and absenteeism monitored on VSWare
- **Monday & Wednesday 4:00 – 5:00**
- **Tuesday & Thursday 3:30 – 4:30**



Evening Study

No Charge for 1st years

- 1-2 hour after school
- Food available before starting
- Fully Supervised
- Register is maintained and absenteeism monitored on VSWare
- **Monday & Wednesday 4:00 – 5:00 / 5:50**
- **Tuesday & Thursday 3:30 – 4:30 / 5:30**



Guidance Counsellors

Our role is to assist students through learning experiences to develop self-management skills which will lead to effective choices and decisions about their lives. It encompasses the areas of personal and social development, educational guidance and career guidance.

1st year 2 modules with a Guidance Counsellor

Module 1

Moving to Second Level, programme over 6 weeks which helps students to become more familiar with their new school and feel a connection to it, where to go for help if they need it and to identify stressors (if there are any) in making the transition to second level



Module 2 – Restorative Practice

Restorative practices help us develop and sustain strong and happy school communities by:

- Actively developing good relationships
- Preventing the escalation of conflict
- And handling conflict in a creative a healthy manner

1st Year Module we help students use restorative language to:

- Express their feelings and needs to promote connection and building relationships

We use restorative circles and conversations

- To help students handle conflict in a healthy manner and we try and help them create a community of care and take responsibility for their own wellbeing



School and Education

- School building - moving and base room
- Lockers
- 9 different teachers in one day
- Teaching styles and personalities
- Subjects/timetable
- New timetable
- Canteen
- School Diary
- Homework management. *Some homework may not be due in for a few days.*
- Examrevision.ie



Examrevision.ie

My Portal

Live Courses

Logout

Contact us

Noreen Ryan

St. Ailbe's School

Subjects

Live Courses

On-Demand Courses

Manage Class

Account Settings

Log Out

Your Subjects

+ Add more subjects

Junior Cycle

History

Complete Revision Package

Junior Cycle

English

Complete Revision Package

Junior Cycle

Home Economics

Complete Revision Package

Junior Cycle

Irish

Complete Revision Package

Junior Cycle

Science

Complete Revision Package

Junior Cycle

Business

Complete Revision Package

Junior Cycle

Maths

Complete Revision Package

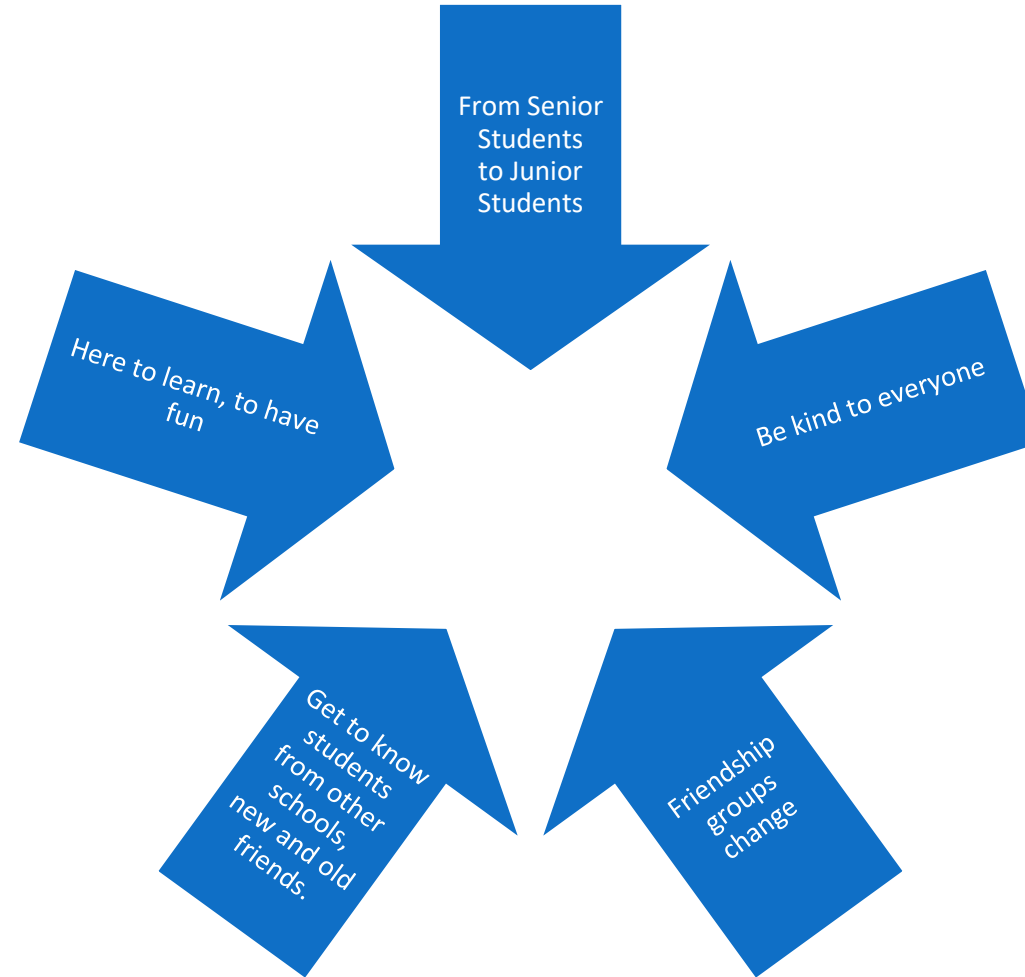
Junior Cycle

Geography

Complete Revision Package



Relationships & Friendships





Things to Consider

We all have our own
unique set of strengths

With adolescence comes
ownership and
responsibility

Self esteem is often
fragile at this time.
Relationships/friendships
play a major role

Helpful Boundaries, Be
the reason to say no

Active participation in
growing up – school,
friendships, sport, extra-
curricular activities

Do encourage a good
night's sleep. sleep and
rest are important

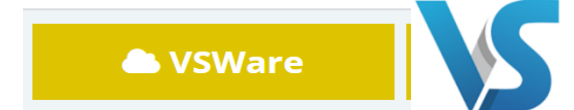
VShare



VShare is a management tool used for recording Assessment, Attendance, Behaviour, Timetabling and sending Text Messages. You can download the app from the App store or go through the St. Ailbe's website. Instructions available on the website under Downloads.

Parents/Guardians have access to VShare where they can see their son/daughters Personal Details, Attendance, Behaviour, Timetable and all Term Reports. It can also be used for parents to enter reasons for absence, appointments, signing out etc.

You will receive a Username and Password by Text to access VShare



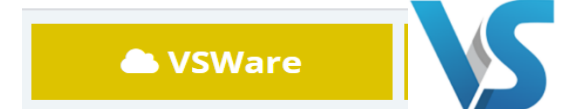
VShare



Term Reports can only be seen on VShare, they are no longer posted home.

Check VShare on a daily/weekly basis for to help keep you informed on attendance, behaviour, etc.

Please use the office phone if you're trying to contact your child during class time.





Way2Pay

Online payment system for School Fee and Extra Curricular Activities, which can be accessed on St Ailbe's website

- Debit card is required for payment
- Valid mobile number as on enrolment form
- Text message with link/password late June/July
- Receipts issued by text
- Cash only payment at office
- Cheques payable to Tipperary ETB only





School Fee

The school fee for first year is €100 for the year which will be due in mid-August. The school fee covers the cost of:

- 1) School insurance
- 2) Locker and locker key
- 3) Classroom Materials for practical subject taster blocks
- 4) Photocopying
- 5) Student testing (PPAD-E test for literacy and numeracy test)
- 6) Bus costs



The following is provided to all first-year students for free:

- 1) All school text books
- 2) School journal
- 3) Copies and hardshell copies
- 4) Subject colour coded folders
- 4) Access to examrevision.ie
- 5) Numerous school educational activities

Please note this will be subject to change



Student Journal

- Code of Behaviour
- Code of Discipline/ Ladder of Referral
- Permission to Leave School
- Message to Parents
- Report cards
- Positive Behaviour Tracker
- White Report
- Yellow & Red Report



Dates for your diary:

- **Friday 20th & Saturday 21st June** – tracksuit fitting. There will be an online booking system.
- **Wednesday 20th August** – 1st year registration. Students can collect their books, tracksuit, locker key and journal.
- **Tuesday 26th August** – first day of school. First years only.



Contact Details

Noreen Ryan – Guidance & Counselling

noreen@ailbes.com

ext. 104

Edel Merrigan – Guidance & Counselling

edel@ailbes.com

ext: 113

Alanna O'Donovan – School Completion

alanna@ailbes.com

ext: 111

Eoin Kennedy – HSCL

eoin@ailbes.com

ext: 114



**Thank you for attending our
Information Evening – please feel free
to ask any questions.**